

## Section 1. PRODUCT DESCRIPTION

### FLANGE HEAD SELF-DRILLING SCREW – WSPC

Flange head self-drilling screw WSPC is made of heat-treated carbon steel with galvanized zinc coating 5 µm. The screw has flange head which increases the pressure area and self-drilling tip which makes fixing in steel members easier and faster.

#### Use:

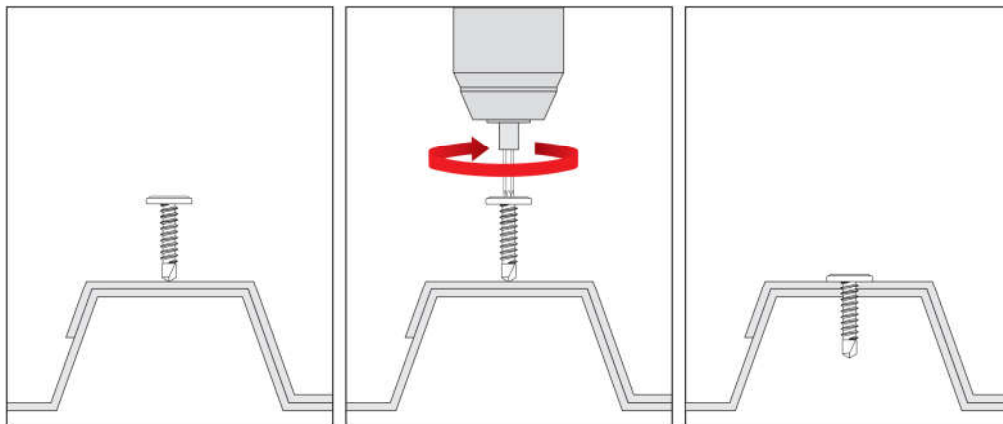
- fixing steel sheets in steel constructions
- flashings
- making lap joints in steel sheets
- production of joinery



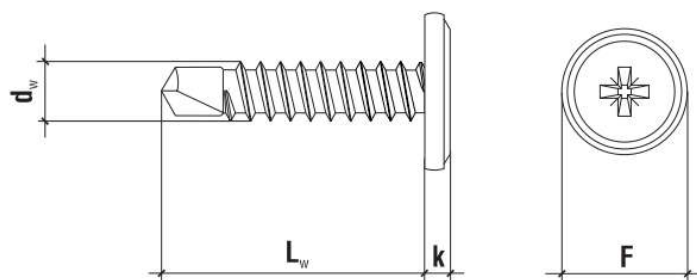
Self-drilling screws conform to: PN-EN 14566+A1:2010

## Section 2. METHOD OF INSTALLATION

1. Original self-drilling screws delivered by the manufacturer can be used only
2. Before installation identify the substrate, its thickness and environmental conditions (expressed as corrosivity categories), and then select screws which meet the above criteria
3. Correctly select screw type, its length, drilling capacity depending on sum of thickness values of members being fixed
4. Drilling capacity for each screw is given in corresponding Product Data Sheet and PN-EN standard, and stands for the sum of thickness values of members being fixed
5. Make sure to set optimum rotary speed when screwing, as too high rotary speed may cause burning of drilling bits and make it impossible to fasten the screw
6. At all times screws should be installed perpendicularly to the substrate surface



## Section 3. TECHNICAL DATA



PRODUCT DATA SHEET – WSPC

TECHNICAL PARAMETERS		
Parameter	Unit	Value
Screw diameter	$d_w$ [mm]	4,2
Drilling capacity	$\Sigma t_i$ [mm]	$\leq 2$
Drive type	S [mm]	PH-2
Head height	k [mm]	2,3
Head diameter	F [mm]	11,0
Tip length	[mm]	8,0
Screw material	-	carbon steel
Corrosion protection	-	galvanized zinc coating 5 $\mu\text{m}$
Substrate material	-	steel $\geq$ S235JR
Standard	-	PN-EN 14566+A1:2010

INSTALLATION PARAMETERS		
Parameter	Unit	Value
Screw diameter	$d_w$ [mm]	4,2
Diameter of hole in the substrate	$d_o$ [mm]	-
Min. depth of hole in the substrate	$h_o$ [mm]	-
Anchorage depth	$h_{\text{eff}}$ [mm]	push-through
Min. substrate thickness	$h_{\text{min}}$ [mm]	0,5
Min. spacing	$s_{\text{min}}$ [mm]	50
Min. distance from edge	$c_{\text{min}}$ [mm]	25

SELECTION TABLE			
WSPC (galvanized zinc coating ZN)	Screw dimensions	Max. usable length	Number of pieces in a box
	$d_w \times L_w$ [mm]	$t_{\text{fix}}$ [mm]	[pcs]
WSPC-42013	4,2 x 13	3	1000
WSPC-42016	4,2 x 16	6	1000
WSPC-42019	4,2 x 19	9	1000
WSPC-42025	4,2 x 25	15	500
WSPC-42032	4,2 x 32	22	500
WSPC-42045	4,2 x 45	35	300
WSPC-42055	4,2 x 55	45	300

Section 4. REMARKS

1. All previous versions of this Product Data Sheet shall cease to be valid
2. Data given in this Product Data Sheet is in accordance with current knowledge and published in good faith. KLIMAS Sp. z o.o. is not responsible for correctness and quality of the fixing if recommendations regarding method of use and installation are not followed.